

**INDEPENDENT
LIGHTING**

Sta®LED City

**BLACK-OUT
NON STOP
SYSTEM**



2026

**10 YEARS
WARRANTY**

AUTO CLEAN SOLAR STREET LIGHT

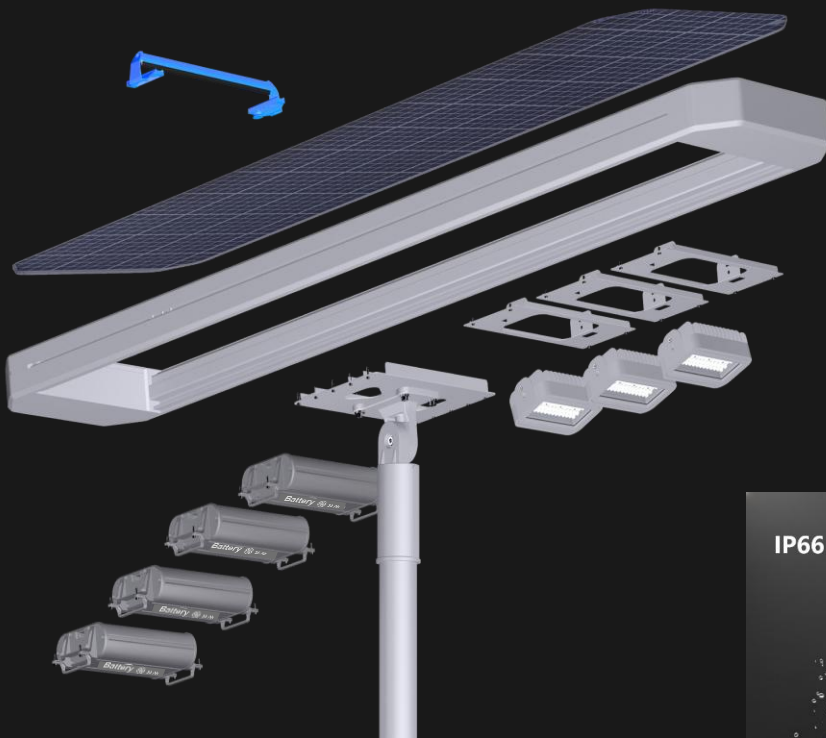
Sta®LED Wiper-80

Pole: 5 m



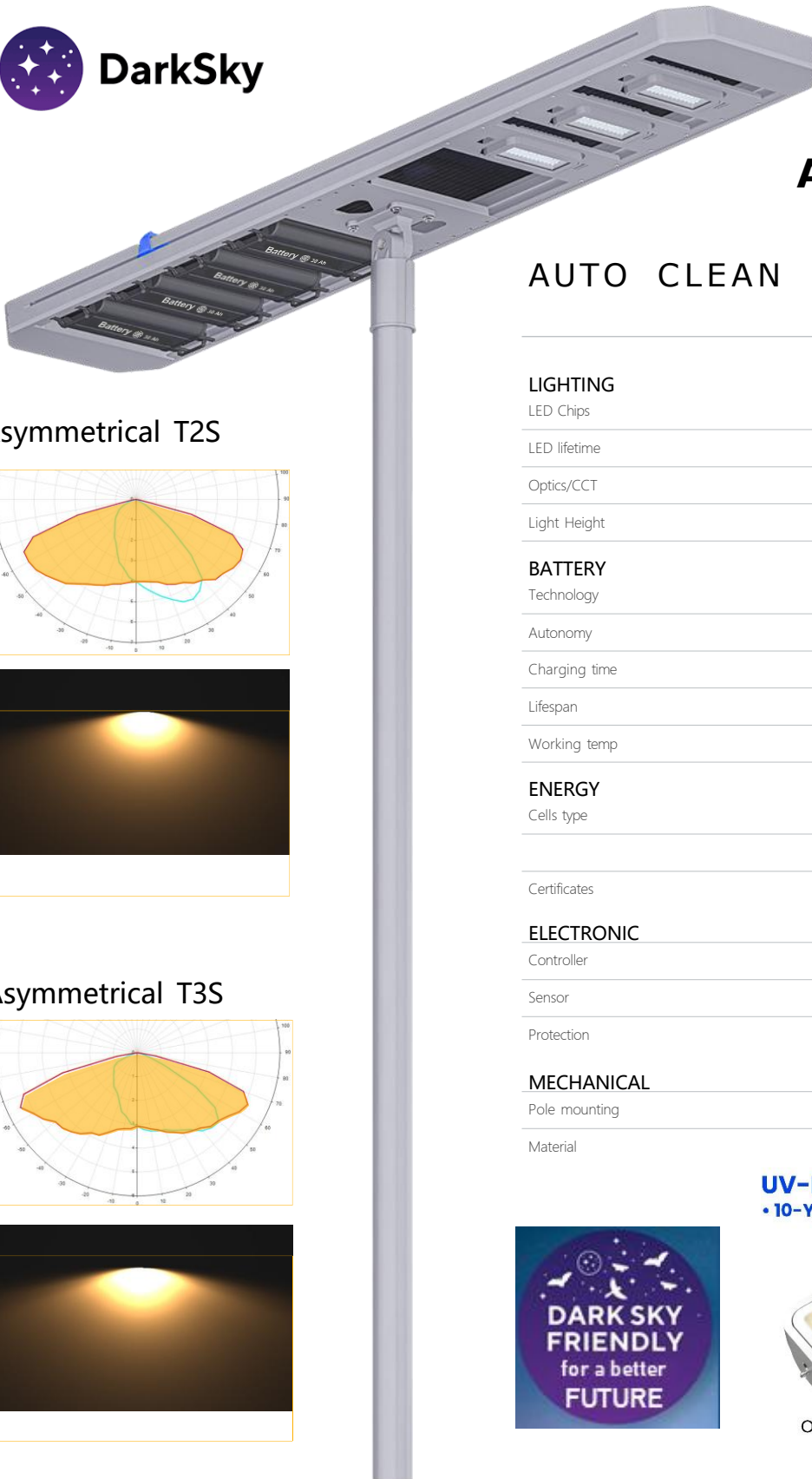
Sta®LED Wiper-100

Pole: 7 m



**IP66 WATERPROOF
DUSTPROOF**

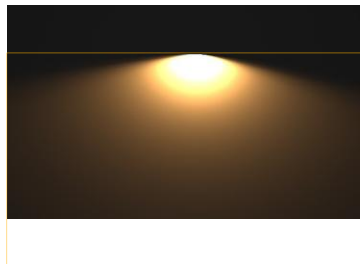
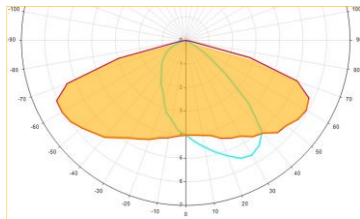




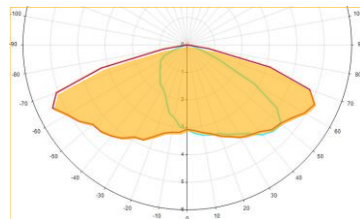
AUTOMATIC SYSTEM

AUTO CLEAN SOLAR STREET LIGHT

Asymmetrical T2S



Asymmetrical T3S



LIGHTING

LED Chips	High Bright 3030
LED lifetime	Over 100,000 hours LM80
Optics/CCT	TII,TIII / 2700 to 6500K
Light Height	From 5 To 7 Meters

BATTERY

Technology	Lithium Iron Phosphate LIFEPO4
Autonomy	Over 24 hours at full charge - 4 Rainy Days back up
Charging time	5-6 hours
Lifespan	Over 5000 CYCLES @ 50% DOD over 10 years Lifetime
Working temp	0°C to 55 °C - (optional -30°C TO 60 °C)

ENERGY

Cells type	Monocrystalline Panel Grade A 25 years
	IEC 61215 - IEC 61730 I and II - IEC 60904

Certificates

ELECTRONIC

	MPPT SMART CONTROLLER
Controller	Microwave 360° Motion Sensor
Sensor	Battery Management System (BMS)
Protection	

MECHANICAL

	Φ64mm or Φ80mm
Pole mounting	Aluminum
Material	

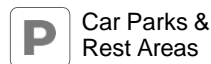
UV-Resistant Glass Lens • 10-Year Clarity Guarantee



Ordinary PC lens



Wiper-On glass lens

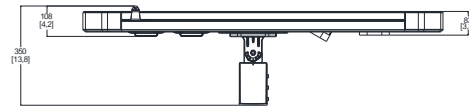
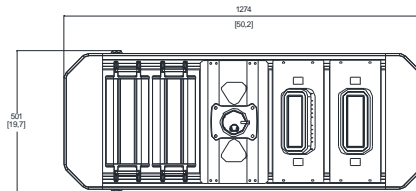




LED Solar Street Light for a NEW ERA

PRODUCT PARAMETERS

Sta®LED Wiper-80

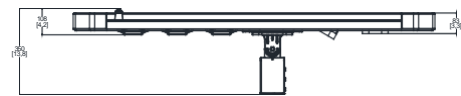
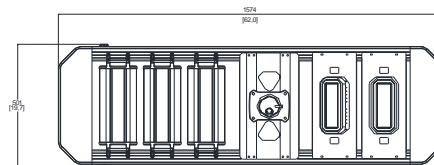


Product: 1274X501X108
Carton size: 1464x546x163

Height:
5 meters

Code	Watt	Lumen (lm)	Diffuser	Solar panel	Capacity	N.W/pc(kg)	G.W/pc(kg)
WIPER-80	80W	12,800	Glass	90W/18V	768WH(12.8V)	25.0	27.0

Sta®LED Wiper-100

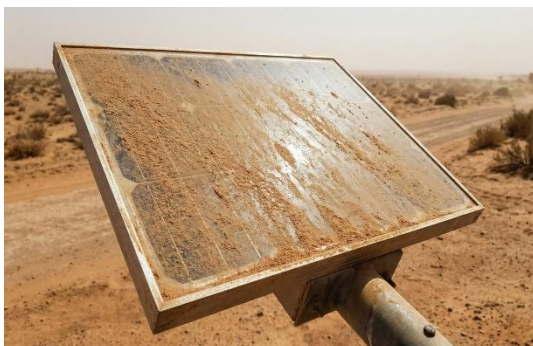


Product: 1574x501x108
Carton size: 1764x546x163

Height:
7 meters

Code	Watt	Lumen (lm)	Diffuser	Solar panel	Capacity	N.W/pc(kg)	G.W/pc(kg)
WIPER-100	100W	16,000	Glass	120W/18V	960WH(12.8V)	29.0	31.3

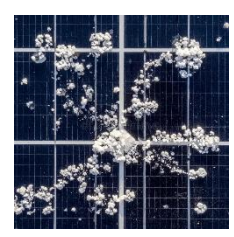
Permanently like when NEW = **WITHOUT LOSING** ANY POWER OVER TIME!



**DUST,
BIRD
DROPS**



**SNOW,
LEAVES,
ETC.**





PRODUCT ADVANTAGES

6 Extreme Durability Verified



IP66 Waterproof



High Temperature Test



Salt Spray Test



Drop Test



Windproof test

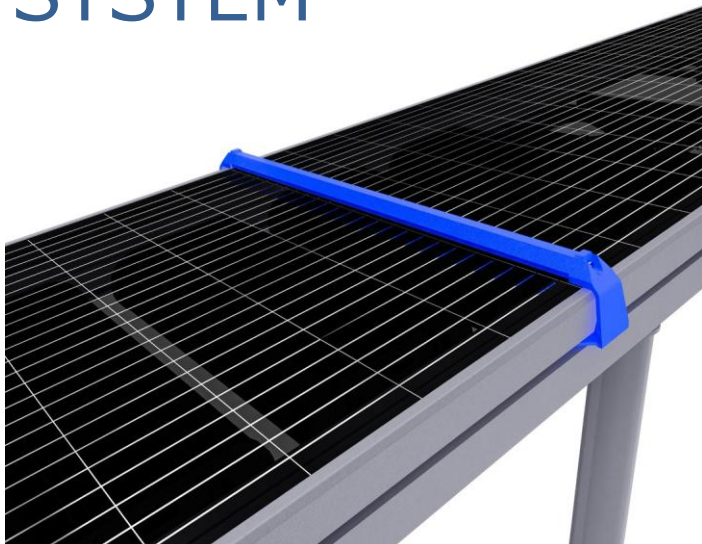


Vibration test

A daily and effective maintenance service.



AI DUST REMOVAL SYSTEM



Equipped with an intelligent dust removal system, this solar street light automatically cleans the panel to ensure maximum charging efficiency and stable lighting performance even in dusty or sandy environments.

- **Auto Dust Removal System:** Keeps panels clean for optimal solar absorption.
- **High Efficiency:** Maintains up to 99% charging efficiency.
- **Smart Control:** Cleaning can be timed.
- **Durable Design:** IP66 aluminum housing, anti-corrosion, weatherproof.
- **Low Maintenance:** Reduces manual cleaning needs by over 90%.



LED Solar Street Light for a NEW ERA

INDEPENDENT BATTERY BOX

Independent **shockproof and impact-resistant aluminum alloy** battery box, engineered for durability and reliability.

Featuring a **5-second quick-release design**, the battery can be removed or replaced effortlessly without tools—saving time and simplifying maintenance in any outdoor environment.

Built to withstand harsh weather, vibration, and high-temperature conditions, it ensures stable performance and long service life for your solar lighting system.



STEP 1

5-Second

- Quick Release Battery System



STEP 2

BATTERY LIFEPO4

- Extreme Temperature
-30°C to 60°C (Optional)



+ OVER 10 YEARS LIFETIME

The **WIPER-ON** Series is equipped with **Lithium Iron Phos-phate LiFePo4** battery. This technology is proved to be **the best chemical technology for solar application on the market.**

With a cycle life of over 5000 Cycles @ 50% DOD, the battery enjoys over 10 years lifetime.

EXTREME TEMPERATURE

0 °C TO 55 °C (- 30°C to 60°C OPTIONAL)

When Standard Lithium LiFePo4 batteries enjoy a working temperature range from 0 °C to 55 °C. Optional new special lithium iron phosphate batteries are available,with an operating temperature range of **-30 °C to 60 °C.**

LED Solar Street Light for a **NEW ERA**

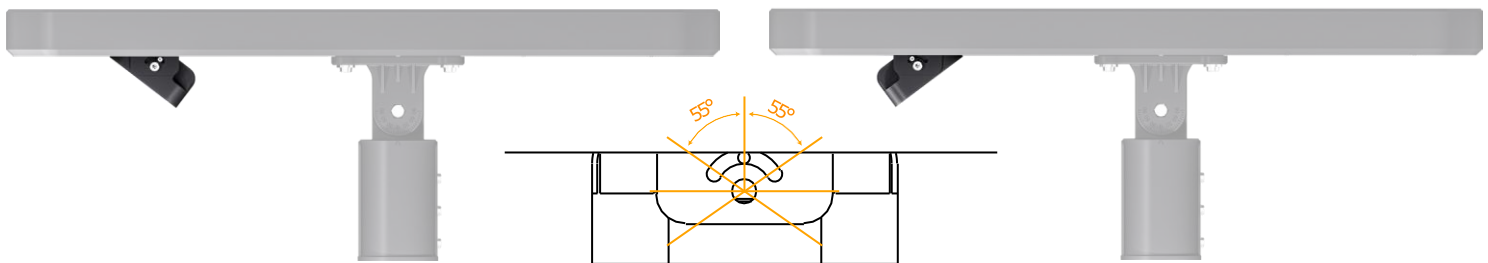


ALWAYS FACE BOTH SUN & ROAD

Recognizing the challenge where the ideal direction for street lighting does not always match the optimal orientation for solar panels, we've engineered a solution with independently tiltable solar panels and LED modules.

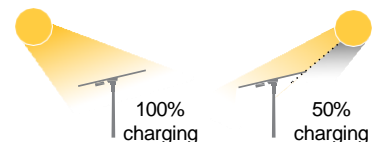
This innovative design ensures maximum solar energy capture and targeted area illumination, effectively addressing this common issue in solar street lighting.

TILTABLE LUMINAIRE



Thanks to its smart construction, the luminaire can be easily tilted without tools to always face the road,

TILTABLE SOLAR PANEL



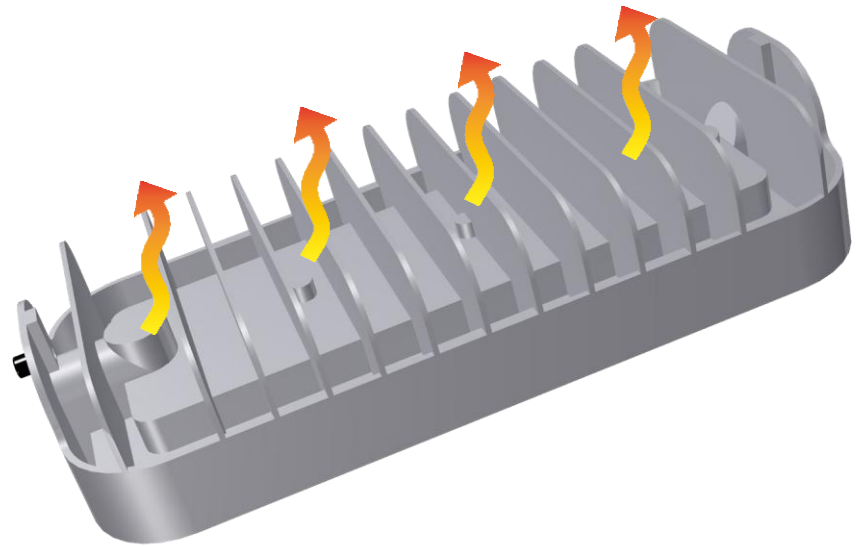
The tiltable solar panel allows for optimal alignment with the sun's direction, ensuring maximized charging efficiency,





Independent Heat-dissipation Module

Features an independent heat-dissipation module constructed from one-piece die-cast aluminum alloy, delivering highly efficient thermal management with heat conduction up to **200 W/m·K** for stable, long-life performance.



Explosion Proof Tempered Glass

+ Impact and UV Resistant Properties



Superior Glass Diffuser vs. Plastic Lenses

- **Material:** 3mm explosion-proof tempered glass.
- **High Transparency:** Up to 95% light transmittance.
- **Exceptional Durability:** Withstands UV exposure (>10,000 hours) with minimal yellowing ($\Delta YI < 2$).
- **Stable Performance:** Prevents surface oxidation and lumen decay for consistent CCT.
- **Wide Operating Range:** Reliable from -30°C to $+60^{\circ}\text{C}$.
The Difference: Avoids the 10-20% yellowing common in PC/PMMA lenses within 2-3 years, ensuring long-term clarity and optical precision.



CONTROLLER MPPT

In a search for performance and reliability, our products are equipped with MPPT technology controller offering the best charging efficiency on the market up to 98%

- Minimal stand-by power consumption •
- Current consumption $\leq 10\text{mA}$ •
- Intelligent battery management •



Pr 1	3 h	9 hour s
Pr 2	12 h	
<input type="checkbox"/> 100% ON		<input type="checkbox"/> Presence sensor 30% - 100%

CONTACT US FOR **MORE PROGRAM OPTIONS**



MOTION SENSOR MICROWAVE

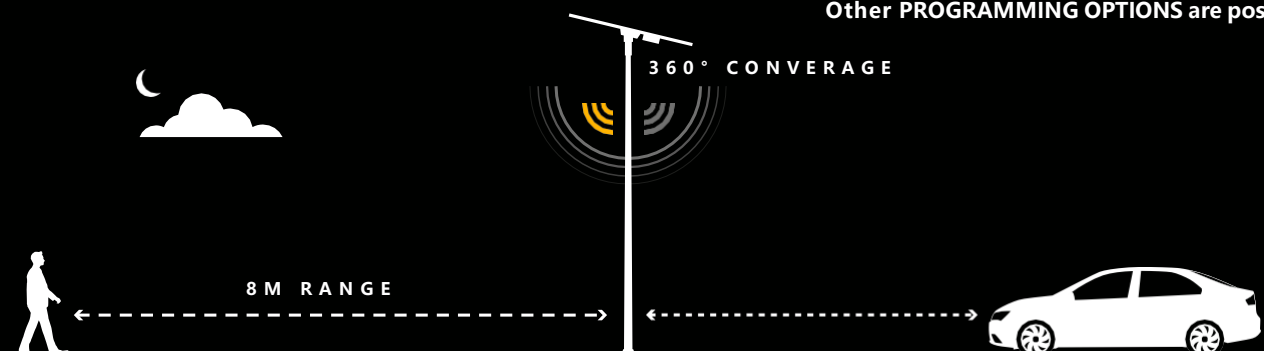
The sensor emits a high frequency wave to reflect off of and analyze the objects in the vicinity.

- Much better reliability compared to the Infrared detector
- Up to 360° Directivity
- Insensitivity to other environmental variations such as light, color, temperature, etc.

+more functions and PRACTICAL USES!



Other PROGRAMMING OPTIONS are possible.



LED Solar Street Light for a **NEW ERA**



EASY INSTALLATION

Our technicians carry out the installation, activation, and maintenance. **TURNKEY**



Insert, orientate & choose desired tilt.



No construction WORKS = unwired



Quick and easy assembly

NO CABLING - NO TRENCHING - NO VEHICLES



NO CEMENT



Plug & Play

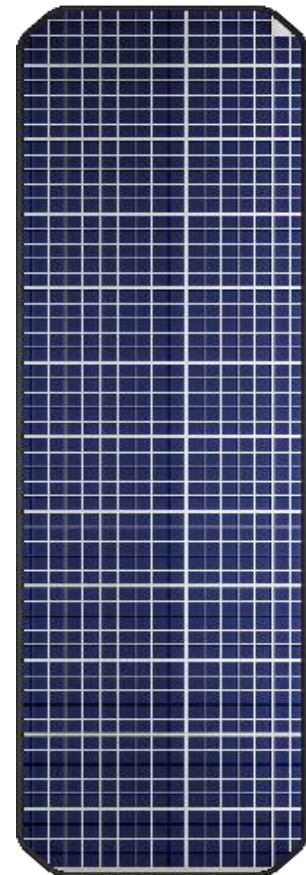
ALL IN ONE



Monthly invoice



Double charge



EXCLUSIVE PRODUCT

POLE

**ALUMINIUM
3-4,2mm & HEIGH
5 - 7 METERS**

Serie PRO

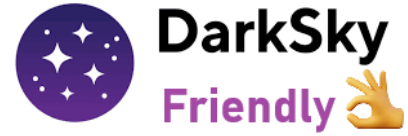
Private **OFF GRID LIGHTING**

Public **OFF GRID LIGHTING**

LED Solar Street Light for a NEW ERA



Various Application



Star-LED Wiper-ON solar street lights with dust removal system are highly versatile and suitable for city roads, highways, community paths, residential courtyards, parking areas, rural trails, garden walkways, and public squares.

It features a modern, stylish design that combines high brightness with functionality and aesthetics. No external power source is required, as they utilize clean, renewable energy, making them eco-friendly and energy-efficient. Optional cameras can be added for enhanced security.

Clearly: the most useful and practical option!



INDEPENDENT
LIGHTING

Sta®LED City

BLACK-OUT
NON STOP
SYSTEM